



EMR Internet Interface™

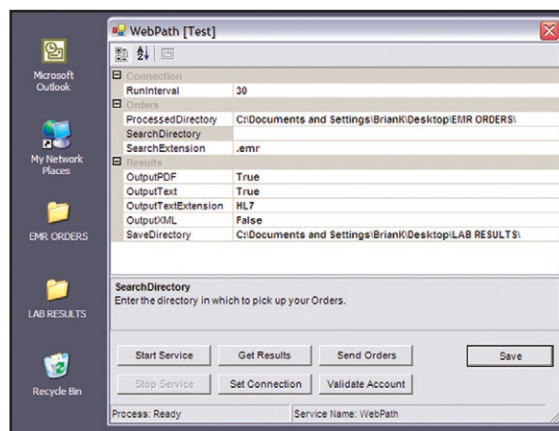
Overview

Psyche Systems has developed an easy-to-use EMR module. With a dynamic, internet interface between facilities, physician groups, hospitals, offices, etc. – users are able to facilitate automated processing of tests, search for orders, view and save results. Communication to and from Psyche Systems' LIS – LabWeb – or any commercially available LIS occurs over the Internet for sharing with any commercially available electronic medical records information system. Information is exchanged using standard industry file formats including HL7, XML and PDF.

All of this through secure, web access – at less than half the cost of other industry EMR interfaces.

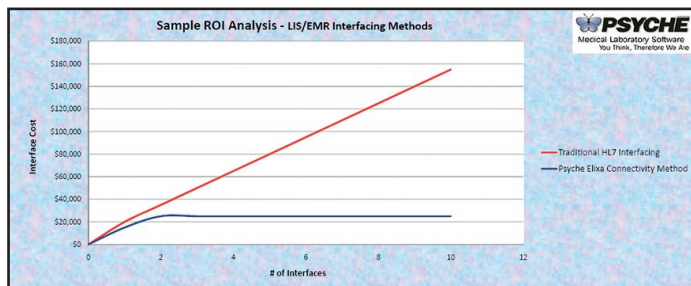
EMR Internet Interface Features Include:

- » Streamline data sharing between your LIS and EMR Systems
- » Easy, rapid integration to your customer's EMR
- » Client Software – search for orders in a specified directory
- » Saves results in a specified directory



Efficiency and Accuracy

According to JCAHO, the laboratory generates as much as 80 percent of the information that physicians rely on for medical decisions, and test results account for some 80-90 percent of data in a patient record. As EMR adoption rises, integrating laboratory data directly into both the hospital's and physician office's EMR systems has significant advantages in improving patient care, managing pay-for-performance programs, and also in creating efficiencies and reducing clerical errors to help labs improve reimbursement rates.



Traditional HL7 interface = red
Psyche e.lixa's EMR method = blue

Contact Us

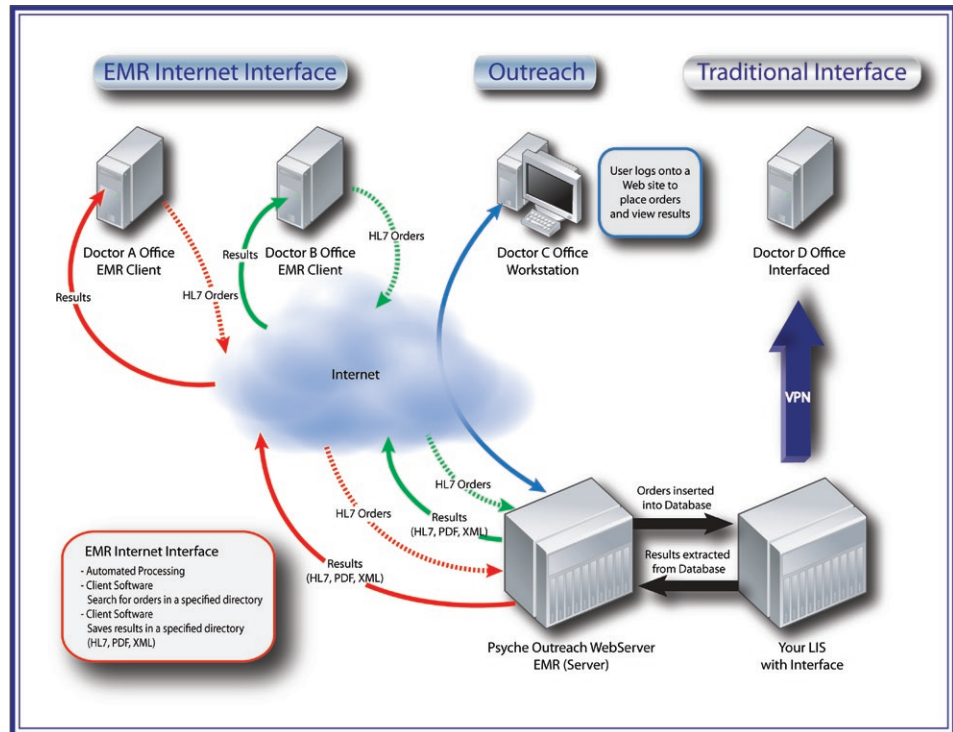
Psyche Systems Corporation
321 Fortune Boulevard
Milford, MA 01757
800-345-1514

www.psychesystems.com

 **PSYCHE**
Medical Laboratory Software
You Think, Therefore We Are



~
 Don't just keep up
 with innovation -
 stay on top of it.
 ~



About Us

Psyche Systems Corporation is a private, profit-driven software company that has focused exclusively on delivering laboratory information systems to hospitals and clinics since 1976. It is this unwavering focus on serving its core customer base that has enabled Psyche to maintain strong customer loyalty and deliver on its commitment to high quality products and services. Psyche Systems' laboratory information systems are best-of-breed products designed to meet the specific needs of clinical and anatomic pathology laboratories. Psyche Systems works closely with its customer base during product development to ensure it's delivering the highest quality products and services at a competitive price.

Psyche's Products

- » **LabWeb** – a full-featured laboratory information system (LIS), including advanced functionality; rules-based analysis, a lean powerful database for indepth analysis, and quality assurance and quality control capabilities.
- » **SBB** – Psyche Systems Corporation's 510(k) approved Systematic Blood Bank (SBB) package exceeds the FDA guidelines regarding computerization of blood banks and transfusion services to deliver advanced features for improved efficiency, security and reporting.
- » **e.lixa** – Suite of hosted applications which extends and enhances existing laboratory information systems so that you can seamlessly add advanced functionality to maximize current IS investments.
- » **WindoPath** – WindoPath is a highly advanced, full-featured anatomic pathology information system with a modular, customizable design.